



LIMERICK LANE

ESTATE

30 Acres, Planted in 1910

5 Acres of Original Planting Still in Production

APPELLATION

Russian River Valley

PRODUCTION

5,000 cases per year

FAMILY OWNED

Jake & Alexis Bilbro

4th Generation Sonoma County Winemaker & Farmer

WINEMAKER

Chris Pittenger

GENERAL MANAGER

David Messerli

PR & MARKETING

Gina Lathrum



FAMILY OWNED

Jake & Alexis Bilbro

WINEMAKER

Chris Pittenger

chris@limericklanewines.com

GENERAL MANAGER

David Messerli

david@limericklanewines.com

PR & MARKETING

Gina Lathrum

gina@limericklanewines.com

ACCOUNTING &
HUMAN RESOURCES MANAGER

Rhonda Whittaker

rhonda@limericklanewines.com

VIP GUEST EXPERIENCE CONCIERGE

Andy Tester

andy@limericklanewines.com

GUEST RELATIONS & CUSTOMER SERVICE

Ilana Niernberger

ilana@limericklanewines.com

ESTATE HOSTS

Mary Fernandez

mary@limericklanewines.com

Dan Taylor

Shakir Cordice

CELLAR MANAGER

Cody Mork

cody@limericklanewines.com

LIMERICK LANE

LIMERICKLANEWINES.COM | 707.433.9211

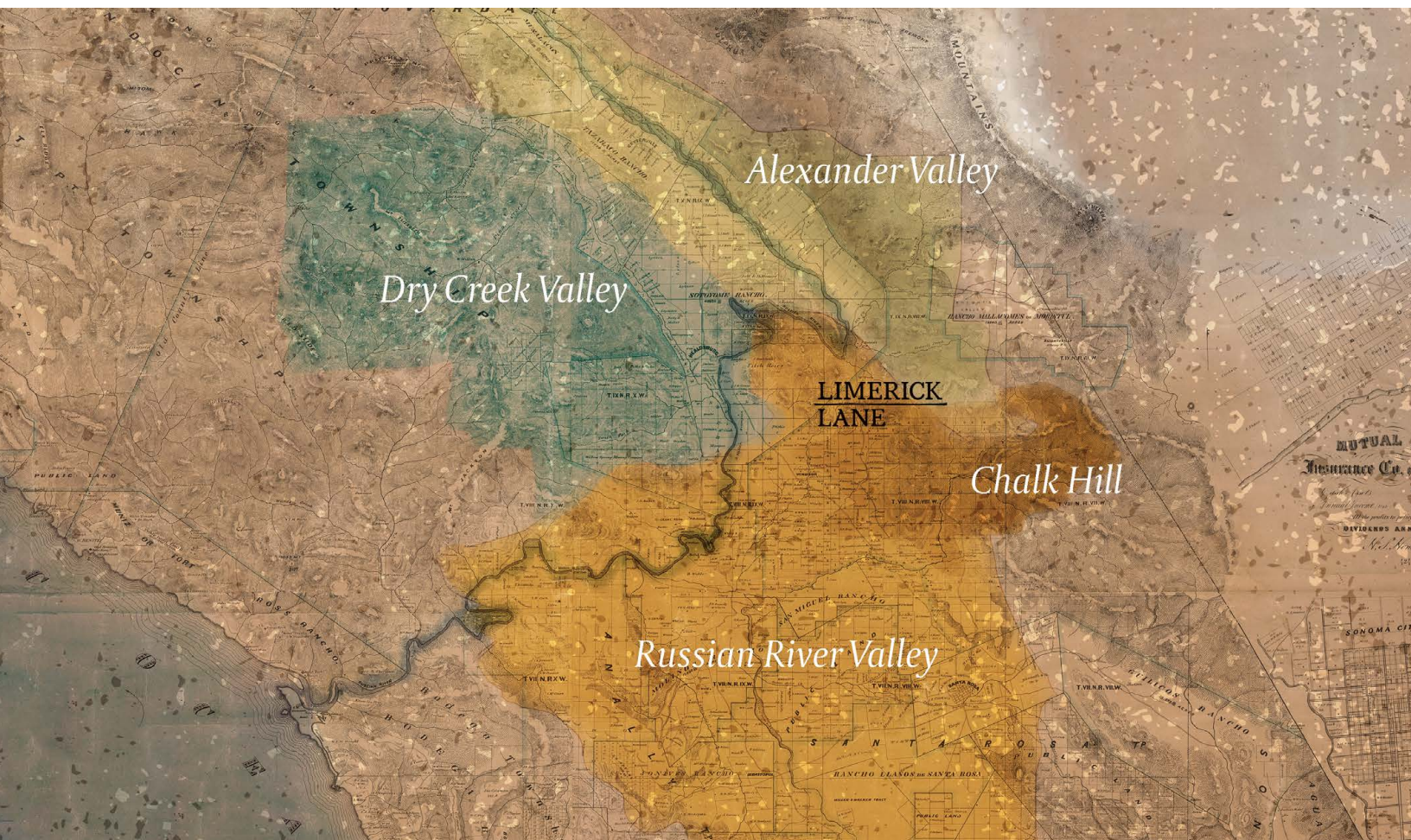
THE ESTATE

At Limerick Lane, we believe in magic, luck, dreams, kismet, and hard work.

We believe in the perfect balance of family, soil, rocks, fog, love, risk, and sunshine. We believe that all of these attributes topped off with a little bit of faith and good fortune allow us to grow, produce, and bottle wines of the highest caliber and distinction. Wines that are vintage reflective expressions of the dirt and rocks underfoot, the fog and sunshine above, and the sweat and laughter of the people who have chosen to live and grow alongside these century old vines in this magical and wondrous place. The greatest wines in the world come from magical sites, and they are few and far between. They are songs that come from the earth. They transcend definition, classification, and trend. They just are.

Limerick Lane lies where four unique appellations come together, on a 30-acre estate just inside the northeast corner of Sonoma County's Russian River Valley. In an appellation that's renowned for Pinot Noir and Chardonnay, we grow and produce world-class Zinfandel and Rhone Varietals. We sit at an exact point where soil, water levels, rocks, sunshine, wind and fog meet. On top of, underneath, and in the midst of these earthly factors sit grapevines perfectly evolved in their composition to thrive in this exact environment. Without any one of these individual factors, these wines wouldn't exist.

These wines can only be made here.



LIMERICK LANE

THE PEOPLE

We are authentic, humble, family first, unpretentious, and grateful.

As a business and as people we avoid dogma, we are open to new perspectives and opinions, and we always look for the opportunity in the obstacle. We exude positive energy and we are always appreciative. While we lack pretention, we are very serious about our craft. Our wines are world class, our people are world class, and our hospitality is world class.



Chris & Jake

JAKE BILBRO *owner*

Jake Bilbro is a fourth-generation Sonoma County winemaker and grape grower. Native to Sonoma County and Healdsburg in particular, Jake grew up checking vineyards throughout the Dry Creek and Alexander Valleys with his dad while drinking cream soda and playing hide and go seek tag with his brothers in his dad's winery: Marietta Cellars. Jake's passion for the wine lifestyle began at a very young age when his chores were cleaning barrels, dragging hoses, and in most ways being his dad's shadow. Living amongst the vines and wines of Sonoma County ignited a relationship and bond with vineyards, wine, dirt, food and the seasonally minded community of people who make their livelihood here that is inherently part of the Bilbro DNA.

Before gravitational pull brought him back to Sonoma County, Jake attended college at UCSB and then travelled both the US as well as Fiji and New Zealand. He returned to Sonoma County for his true education - to help run Marietta Cellars with his Dad for 16 years. Fate, luck, and happenstance brought him to Limerick Lane (the road) and eventually to owning the century old Limerick Lane Estate where he now produces some of the most acclaimed wines in the Russian River Valley.

Today, Jake and his wife Alexis own Limerick Lane Cellars and Limerick Lane Vineyards and Jake produces estate grown wines that reflect the personality, history, and heartbeat that is ever apparent at Limerick Lane. While under Jake's stewardship, Limerick Lane has received significant acclaim and recognition. Yet, Jake's greatest accomplishment is introducing his children to the wonders of cream soda while walking the century old vines on the estate and still finding the best spots to hide during family hide and go seek tag in the winery.

CHRIS PITTENGER *winemaker*

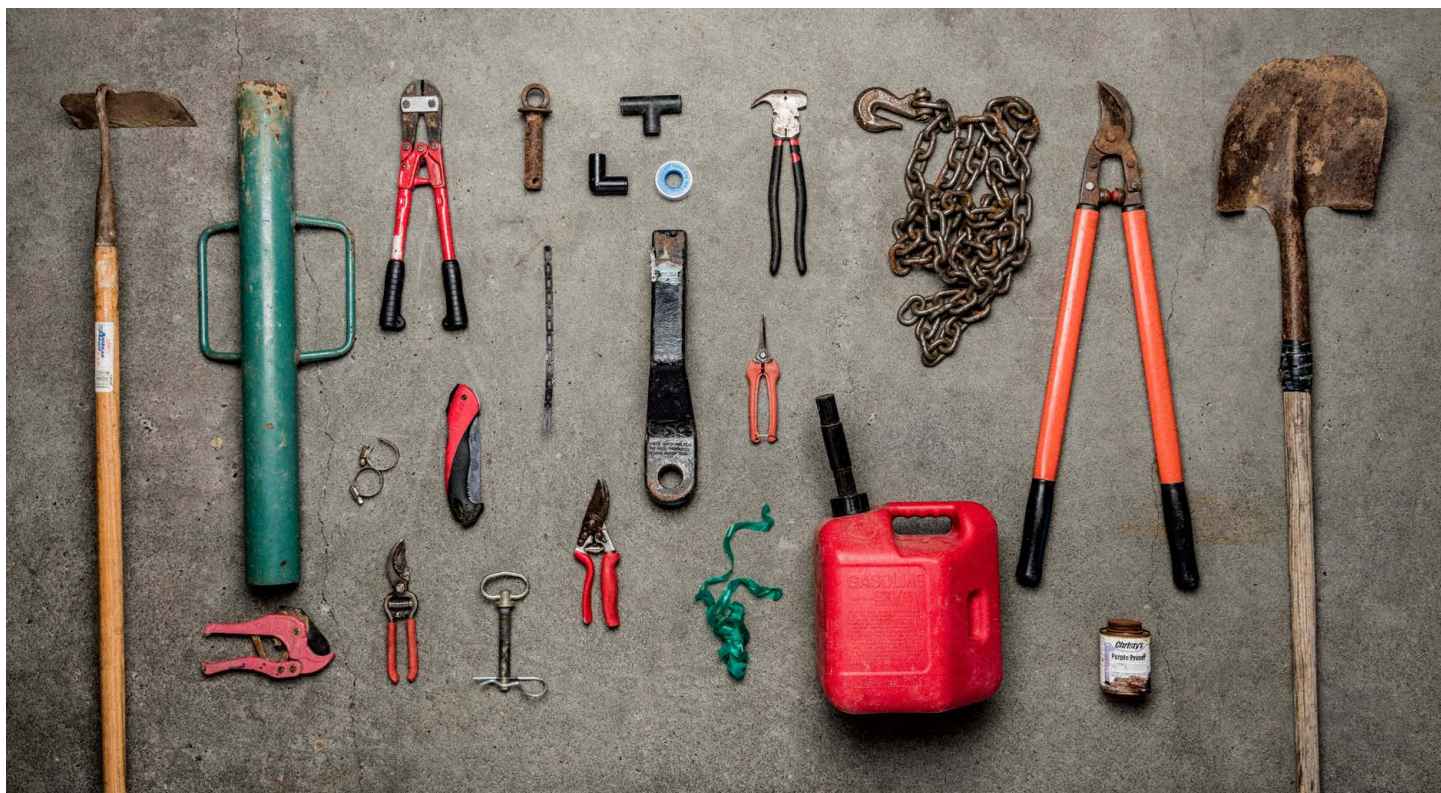
Chris' passion for winemaking was born during his college years at Cal Poly - San Luis Obispo where a viticulture course set him on his path. His first job out of college was at the prestigious Wally's wine shop in L.A, where he was exposed to the best wines of the world and gravitated towards Burgundy, the Rhone, and Piedmont. From there he moved to Jackson Hole to refine his palate (and snowboarding skills) in The Tetons while working as a sommelier in the wine-centric Restaurant Terroir.

Chris always wanted to make wine and jumped at an opportunity to intern at Robert Biale in Napa, working with old vine Zinfandel vineyards. This was followed by vintages at Torbreck (Australia), Williams-Selyem (Healdsburg), and finally, four harvests at West Sonoma Coast winery Marcassin (under Helen Turley).

Chris then spent 11 years as winemaker at Rhone focused Skinner Vineyards in El Dorado, where he championed Mourvèdre and Grenache in the regions' granitic soils and high elevation vineyards.

When Chris returned to Healdsburg to work at Limerick Lane, he felt an immediate connection to this historic vineyard. His goal for this iconic site is to showcase its beauty, grace, structure, and precision through the Limerick Lane wines. To this end he draws from an old world palate developed over two decades, combined with a gentle touch learned while working under some of the world's most respected winemakers.

LIMERICK LANE



FARMING

Less is more. Our decision making process as farmers, as winemakers, and as stewards is to always choose the path that allows the site to speak as loudly and clearly as possible. We aren't trying to grow fruit of predetermined brix nor are we trying to make wine with a predetermined percentage of oak. There is a natural rhythm to the seasons here that leads both our vineyard and our family. Listening and following that rhythm we find the greatest joy. The farming approach at Limerick Lane is simple and straightforward; execution is anything but. We farm organically and always with a sustainable intent. Our goal isn't to have the prettiest and most uniform vineyard but the healthiest and most balanced vines, which in turn grow the most expressive wines.

We irrigate when needed but as little as possible and in some years the vines receive no water at all. We don't use conventional herbicides as they eradicate anything they come into contact with. While slower and more costly, a shovel only digs out the weeds you point it at. We've found that less invasive farming techniques yield more expressive fruit and working proactively to improve soil health minimizes the need to reactively deplete it via the use of broad scope conventional chemicals.

We are not dogmatic. What may work for one vine may not work for its sibling. We don't follow a predetermined script as Mother Nature always bats last.

The vineyard is comprised of 16 blocks that are either dry farmed or minimally irrigated and farmed organically.

16.5 ACRES OF ZINFANDEL

2 ACRES OF GRENACHE

4 ACRES OF SYRAH

1.5 ACRES OF MOURVEDRE

1.5 ACRES OF PETITE SIRAH

.5 ACRES OF FURMINT AND HARSLEVELU

LIMERICK LANE

WINEMAKING

Limerick Lane seems almost as if by serendipity to be the perennial underdog. We make wines that aren't consistent with our appellation. We are located at the end of a dead end road on the wrong side of the valley. Zinfandel and Syrah are viewed as "second class" when compared to Cabernet, Pinot Noir, and Chardonnay. Yet somehow, we consistently receive higher accolades than most of our "first class neighbors" and when compared to the great estates of the world our wines offer incredible value.

Stylistically, the wines produced here are incredibly unique. They are rich, powerful, full-bodied wines that are simultaneously strikingly fresh, bright, and nimble. These wines are unabashedly expressive - a very hard combination to envision and impossible to fake. Our winemaking approach closely mirrors our farming at Limerick Lane. In many respects, it is difficult to determine where one stops and the other starts. Both disciplines complement each other and in essence are geared towards accomplishing the same goal.

Hands off. Eyes on.

Let the vines, the dirt, the rocks, the fog, the wind speak. Intervene with as invisible a hand as possible and trust in the mystery of this extraordinary place and process. The majority of our fruit is destemmed and fermented in 4 ton open top fermenters.

Depending on the health of the fermentation, we inoculate the must but we also allow native fermentations to occur. The wine is aged in predominantly neutral French oak and lies dormant in barrel for anywhere between 12-16 months. The resulting wines speak resoundingly of the soil from which they were born. They are full-bodied and rich with a core of beautiful fresh fruit and striking acidity and structure.



"WHEN THE WORK
SPEAKS FOR ITSELF,
DON'T INTERRUPT"

- Henry J. Kaiser

LIMERICK LANE



THE WINES

*Rich, powerful, full-bodied wines
that are also strikingly fresh and bright.
An unexpected combination that
only occurs in our northeastern
corner of the valley.*

ESTATE CUVÉE

A cuvee of our best barrels and best lots blended to most clearly express site and vintage. This is our most allocated wine.

ESTATE BLOCK SERIES

Individual blocks within the estate that stand out a certain vintage, so we bottle a portion as block designates before assembling the Estate Cuvée.

COLLABORATION SERIES

Our offerings from other extraordinary sites in California - produced in partnership with the growers who farm them.

APPELLATION SERIES

Signature varietally designated wines that express the unique terroir and undercurrents of the Russian River Valley.

LIMERICK LANE

ACCOLADES

“BILBRO’S WINES SHOW A REAL SENSE OF PLACE.

They combine the power of a relatively warm knoll just south of Healdsburg with the cooling influence of the Russian River Valley appellation.”

- VIRGINIE BOONE, JIM GORDON & MATT KETTMANN for *Wine Enthusiast*

“It would be a stretch to call Limerick Lane an up-and-coming winery. Its original vineyard was planted in 1910, and newer plantings in the 1970s established it as a star in the emerging California wine industry.

IN SHORT, IT IS A HISTORIC CALIFORNIA WINERY
WITH A STERLING REPUTATION.”

- ROBERT WHITLEY

“Limerick Lane’s estate vineyard is one of the great, historic old-vine vineyards of the Russian River Valley. With it’s well-drained, rocky soils and expertly tended vines, it produces wines of exceptional harmony and balance. I have admired this vineyard for decades and am

THRILLED TO SEE IT UNDER THE NEW
STEWARDSHIP OF JAKE BILBRO.”

-MIKE OFFICER, Carlisle Winery



LIMERICK LANE

LIMERICKLANEWINES.COM | INFO@LIMERICKLANEWINES.COM | 707.433.9211

ACCOLADES

 WINE ADVOCATE
 WINE SPECTATOR
 WINE ENTHUSIAST
 ANTONIO GALLONI
 JEB DUNNUCK

RUSSIAN RIVER ESTATE ZINFANDEL

2011	91	91		90	
2012	94	94		92	
2013	92		91	91	
2014	94				
2015	91	91		93	
2016	92	93	93	95	95
2017					94
2018					95

RUSSIAN RIVER 1023 ESTATE CUVÉE

2011	92				
2012	95	96	92		
2013	93	96	90		
2014	93				
2015	93	95	95	95	95
2016	94	95	95	94	94+
2017			94		97
2018					96+

RUSSIAN RIVER ROSÉ

2015		94		
2016		92		
2017		94	91	
2018		94		

RUSSIAN RIVER OBSIDIAN BLOCK

2015		94		94
2016		92	93	94

RUSSIAN RIVER 1910 BLOCK ZINFANDEL

2011	95			92	
2012	94	93		93+	
2013	92	91	93	92	
2014	96				
2015	95	91	90	94	95+
2016	96+	94	95	96	96
2017					97
2018					96+

RUSSIAN RIVER SYRAH HAIL MARY

2011	95			92	
2012	92	91		94	
2013	92	90	93	94	
2014	92				
2015	94	90	91	95	94
2016	93+	93	93	94	95

MARQUIS ZINFANDEL

2018				98
------	--	--	--	----

BEDROCK VINEYARD ZINFANDEL

2018				95+
------	--	--	--	-----

KATZ-PONZO VINEYARD ZINFANDEL

2018				95
------	--	--	--	----

RUSSIAN RIVER ROCKY KNOLL ZINFANDEL

2011	92	92		90	
2012	92	93		92+	
2013	95	90	97	91	
2014	92				
2015	94	90	94	94	95
2016			92	92+	93+
2017					
2018					94+

RUSSIAN RIVER HEAD-PRUNED SYRAH

2012	95	90			
2013	94	94	93	95	
2014	93		95	92	
2015	93+	90	95	93	93
2016	93		92	91	94

CARLISLE VINEYARD ZINFANDEL

2018				94
------	--	--	--	----

BANFIELD VINEYARD ZINFANDEL

2018				93
------	--	--	--	----

LIMERICK LANE